

design+
technology
textiles
+design

2013 hsc
major projects
santa sabina college

DESIGN+TECHNOLOGY

Renee Aquilina	5
Kate Archer	6
Julia Bonserio	7
Emily Crozier	8
Alexandra Cucinotta	9
Demi Di Stefano	10
Erika Dwiputri	11
Monique Hanna	12
Elyssa Mastroianni	13
Julia Moiso	14
Taylor Pascale	15
Natalie Tat	16
Jasmine Touma	17
Stacey Tse	18
Sabrina Zambetti	19

TEXTILES+DESIGN

Rochelle Bakhos	21
Philippa Byrnes	22
Lucy Durland	23
Monique Hanna	24
Isabella Khoury	25
Carla Nasr	26
Stacey Tse	27
Isabel Virgona	28

From the TAS Coordinator	29
--------------------------	----

design+
technology

SPORTS ARMBAND - Renee Aquilina

For my Major Design Project I have designed a sports armband that stores personal belongings. My armband is designed specifically for sport and exercise such as cycling, jogging and walking. It is also appropriate for the times when someone does not want to carry a bag. As opposed to regular armbands that are designed only for a phone, I have designed my armband to store money (coins and notes), a credit/ID card, jewellery, a phone, a house key and a car key. The purpose for its creation was due to the genuine need for a storage device that can hold multiple belongings safely whilst doing exercise and can be used by people of all age groups.



DECORATIVE WALL LIGHT - Kate Archer

For my Major Design Project, I have designed a decorative wall light constructed from recycled materials. The genuine need of my project applies to an imperative issue in our modern society today of sustainability which this project aims to support. This is achieved through the use of sustainable materials and energy efficient LED lighting that assists in reducing the amount of landfill and energy produced each year, thus creating a cleaner and more ecological environment. Upon completion, the wall light will be placed in my living room to enhance the room yet meet all functional and aesthetic needs of individuals.



ECO-FRIENDLY LED LIGHTING - Julia Bonserio

For my Major Design Project, I have chosen to construct a floorlamp and wall light, which incorporates energy efficient LED strip lighting. Having recognised my own family's energy consumption, high electricity bills and continuous maintenance of light bulbs is a major responsibility and at times very expensive. It has become my motivation to use LED lighting as the main feature of this Major Design Project, as it is a starting point in developing an energy-saving and cost-effective lighting project, which would be most suitable for my home. My project also uses sustainable materials that have minimal impacts on the environment. The inclusion of such eco-friendly materials assists in the promotion of recycling. These environmental considerations are growing in popularity and their integration in my design creates a sustainable and appealing final product.



MULTI PURPOSE CHAIR - Emily Crozier

My Year 12 Major Design Project is a redesign of a multi purpose chair, commercially named the 'Flippo Chair'. It aims to offer a space saving solution. Due to urban consolidation living space sizes are becoming smaller, multi purpose furniture needs to be implemented to save space and use the space to its potential. The project is made from recycled wood, which reduces its environmental impact and improves the sustainability of my project. The easy fold down back to a flat bench table with the addition of storage space and a removable upholstered seat for comfort, adds to my multi purpose function and dictates a successful product for the target market. Finally, it has also motivated me to create a project which potentially could be a commercial success due to the improvements made on previous designs.



OUTDOOR TABLE - Alexandra Cucinotta

My design revolves around the genuine need to enhance the outdoor area of my new home and create a piece of furniture that is able to be used based on my family's needs. My Major Design Project is to design an innovative outdoor table that can be functional whilst being aesthetically pleasing for the target market. As well as this genuine need, the product will be environmentally friendly as well as sustainable and durable for long lasting use outside and will be a suitable size that will fit a reasonable amount of consumers. The table is made purely from Jarrah with Laser cut plywood inserts.



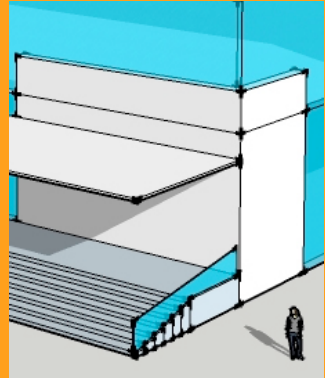
U18 CLUB - Demi Di Stefano

For my Major Design Project, I have designed an underage club that will promote innovation, in a safe and modern way, whilst being a responsible alternative location for teenagers. This club will serve the need of being a safe and controlled environment for teenagers today, whilst being a fun and exciting experience. Due to the non-existent alternative of adult and 18+ nightclubs, and the rising numbers of underage teenagers acquiring fake identifications and underage drinking, I decided to create this concept to address these issues. I've presented the design through communication tools such as Google Sketch up, AutoCAD and a scaled model made from acrylic.



BURWOOD LIBRARY - Erika Dwiputri

For my Major Design Project, I am creating a concept for a new Burwood Library. The aim of this project is to provide visitors with a variety of resources that are beneficial for all members of the public. This library is a combination of a modernised library and a mini museum to provide a more interactive environment for visitors. It has been designed to fit today's generation where there is greater interaction with technology and also supporting new ways of learning. As well as designing the area for learning and reading purposes, this library will allow projects and masterpieces to be presented to the community, giving recognition to members of the public.



SUSTAINABLE HOUSING - Monique Hanna

For my Major Design Project, I have designed a sustainable, modern dwelling for a close relative who has recently purchased a new home that they intend to demolish and rebuild. The design optimises natural lighting, has an effective rainwater harvesting and storage system installed and has been designed to reduce the need for artificial heating and cooling systems through its highly functional energy efficient design. It does not compromise its aesthetics whilst doing so, and incorporates unique features such as an atrium and outdoor lounge and Teppanyaki area, ideal for entertaining. The high ceilings and spacious open living area is modern and accommodates the needs and wants of the client.



BARANGAROO CONCEPT - Elyssa Mastroianni

My Major Design Project is a concept for the commercial redesign of Barangaroo Central with the development of James Packer's Crown Casino. Barangaroo is a public space in which the development of Crown Casino will be finalised by 2019. My concept fits the need for a development which incorporated the Crown as a 'high rollers' casino and 6-star hotel, as well as a public area aimed to accommodate a variety of people from different countries. Barangaroo was named after an important Aboriginal woman at the time of European settlement, thus the landscaping and building facades form a link with our Indigenous history. The high-rise building had limitations of 250 metres, and my aim was to create a space which suits the existing city landscape and design an iconic building for Sydney.



RECYCLED CHAIR - Julia Moiso

For my Major Design Project I have chosen to produce a contemporary chair constructed entirely from used materials with a focus on the design concept of minimalism. I have decided to commit to the genuine need of recyclability and research the issue of landfill, due to the destructive impacts it has on communities and environments. My project, produced solely from used materials, promotes recycling and effectively displays the potential uses of what recycled materials can benefit from and be transformed into. My chair is constructed from offcuts of wood used from previous products in conjunction with the inner tubing of racing bicycle tyres which provide a safe, stable, and comfortable alternative to traditional style upholstery.



INTERIOR ARTEFACT - Taylor Pascale

For my Major Design Project I have chosen to design and develop an interior artefact focused on Modernism. My design requires me to design a modern and abstract product, which will enhance the intended environment as well as cohesively exist within the present décor. The motivation underpinning this project is to enhance an empty and non-functional section of the house. I have incorporated both the beautiful colour and grain pattern of Australian Red Cedar and the industrial appearance of aluminium to create this centre piece.



ECO FRIENDLY HOUSE DESIGN - Natalie Tat

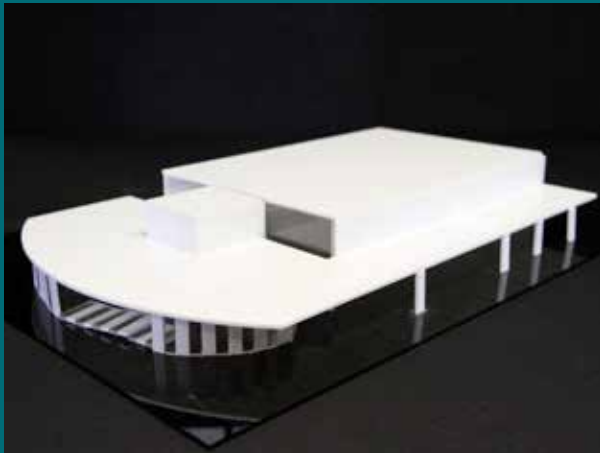
I have designed a retirement home, which has been targeted towards my parents who plan on settling down in a quiet bushland environment in the near future. Recently, a property came on the market and though the house itself was not what my parents had wanted, the location was perfect. Located at a no-through road, the 1287m² property captures a beautiful view of the natural bushland and is a short walk to local parks, grocery stores and local businesses. Faced with this dilemma, I thought creating a house which encompasses all their needs and wants, situated on that property would both express my architectural and interior design interests and help my parents with their decision making. The contemporary silhouette, designed to be cost and energy efficient, integrates skylights and windows drawing in natural sunlight, an effective layout that operates cohesively with passive solar design elements and light, organic colour schemes to create a relaxed and calm living space.

The house for 4 (including guests) tailored to my parents' needs, also interweaves sustainable and eco-friendly features to help minimise as much environmental impact as possible, whilst still remaining functional and aesthetically pleasing and a warm and comfortable space that they can call home.



GYM DEVELOPMENT - Jasmine Touma

My Major Project Design is a concept for a gym franchise called "Downsize". It's a gym designed for overweight people, it provides guidance and a positive workout space by the elimination of the self-conscious and alienating atmosphere found at other gyms through frosted windows, privacy and unique support. Downsize Fitness has been developed specifically with chronically overweight and obese individuals in mind and have equipment custom-made for larger bodies. My Major Design Project is expressed through a building representation on Google Sketch up, a physical model of the exterior as well as a web site and logo design.



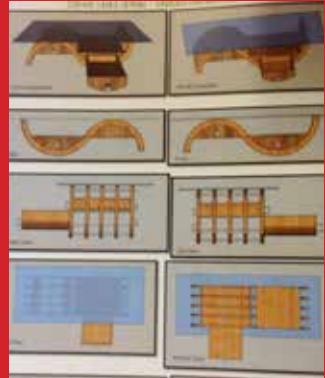
ELDERLY SUPPORT CHAIR - Stacey Tse

For my Major Design Project, I have designed a chair and matching footrest suited for an elderly person that suffers from health conditions that would make everyday tasks such as putting on shoes difficult. This chair provides plenty of support and leverage for them to help them stand up out of their seat without the use of a walking stick. Further, this chair provides comfort as well as storage space which allows convenience. To encourage sustainability, I have decided to produce my chair and footrest from recycled materials, as this will decrease the amount of wastage put into landfill. Also, by using recycled materials, it reduces the consumption of fresh raw materials, energy usage, air and water pollution, therefore addressing the issue of sustainable design.



ART DECO COFFEE TABLE - Sabrina Zambetti

My Major Design Project was to design and construct a contemporary and innovative coffee table. It will be used to enhance the aesthetics of my living room at home and will accommodate the genuine needs of its target market, in this case my family, by integrating functional storage elements. The incorporated modern marquetry design inspired by the Art Deco design catalyst on the drawer fronts of my table, as well as the distinctive style and curvature shape of the table structure have also been requested by my target market. As a result, this further heightens the creativity and originality of the product. It has been constructed using high quality plywood in order to ensure the stability and strength of the product. The table contains four drawers; these drawers can be used to store lightweight products such as remote controls, small brochures, DVD's, small books etc. It is intended to be one of the main features of its designated environment and a product which can be utilised and enjoyed by all family members and guests.



textiles
+ design

COSTUME - Rochelle Bakhos

For my Major Textiles Project, I have chosen to create a costume that will appear in the 4th of July celebrations in New York's annual parade. The inspiration for my costume comes from a strong New York City culture. The iconic Statue of Liberty through its meaning and history reflects a design inspired by Ancient Roman and Greek Goddesses that shapes the country's strong sense of freedom and independence. As well as this, the architecture of New York, particularly the Chrysler Building, is also a main inspiration to the costume, as it reflects the modern element of the New York culture. I have chosen to use a monochromatic colour scheme of jade green to replicate the distinctive colour of the statue and enhance the detailed features and elements of the costume.



TEXTILE ART - Phlippa Byrnes

The wall hanging, The Secret Garden, is a textile art form where its purpose is to adorn a wall and entertain viewers. The main inspiration of the textile art piece is the children's classic novel, The Secret Garden, written by Frances Burnett (1911). Other inspirations include director and artist Tim Burton's gothic designs and the unruly flowers of cottage gardens which guide my interpretation of the Secret Garden from its lifelessness to liveliness. As a design, the wall hanging consists of two main components; the frame is of Tim Burton inspired dead garden and the lively centre of the cottage flower inspiration.



COSTUME - Lucy Durland

The focus area I have chosen is performance costume with the development of a design that is based primarily on the features of the unique Australian Flora. Performance costume was selected because of the scope that this focus area allows in terms of creative design and embellishment. The other link to performance costume is through my great grandmother who designed and created costumes for her family of six children who were in a Vaudeville troop that travelled throughout NSW performing their original show. Inspiration has been drawn from the stories my grandmother told me about the characters she played as a child and the costumes that were made for the family. The costume is designed to be worn by a character in a play, pantomime or dance performance where the story and characters are based on May Gibbs' Australian fiction featuring 'Snuggle Pot, Cuddle Pie and Ragged Blossom'. The embellishment on the costume is inspired by the colours in the Australian bush and rainforests - the colours of flowers, leaves, barks and seedpods with sequins and beading representing dew, nectar and raindrops.



TEXTILE ART - Monique Hanna

My wearable textile art piece was inspired by various visually captivating influences: iconic structures, a snapshot of Waikiki, Hawaii, and the contemporary technique digital printing. The Church of Our Saviour on Spilled Blood inspired the dome-like shape of the skirt, the 3D squares reflecting the pattern adorning the domes, the crochet trim deriving from the cornices of the building, as well as the digitally printed mosaic pattern on the skirt. The pleating on the back of the skirt was inspired by the indented curves on the Burj Al Arab hotel. The Hawaii image is evidently communicated through the digitally printed image, but the symbolism associated with the image - the beach culture and relaxed vibe of Hawaii, is conveyed through the colours white and jade, as well as the bikini inspired bodice. Additionally, digital printing was used throughout the garment to express various aspects of each inspiration.



APPAREL - Isabella Khoury

The inspiration for my Major Textile Project is a traditional 1950's dress as well as the addition of a heart cut out back. My apparel garment has a fitted bodice, which consists of a halter neck and attached midriff with a full skirt that fills out from the natural waistline. The added addition of a petticoat underneath gives the skirt added fullness. The use of the printed fabric with the roses is able to make the dress aesthetically pleasing while also keeping the traditional look. This apparel piece shows off a woman's femininity, elegance and figure through the use of a fitted bodice and a full skirt. The contemporary addition of the heart cut out back is able to add a 'new look' to a traditional 1950's dress while still keeping it vintage. The new and traditional aspects of the garment show my inspiration and this significance to the historical and contemporary aspects.



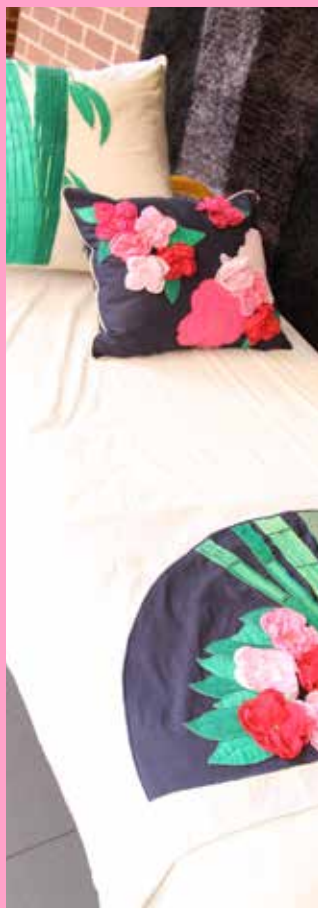
APPAREL - Carla Nasr

My Major Textiles Project is inspired by the Chanel Haute Couture Spring Summer 2009 collection and a majestic crow. The appearance of a crow; fierce and dark has collaborated with the Chanel collection to create an enchanted queen apparel item specialised for opera, drama or theatre outings. It incorporates a variety of techniques, which are evident in the Chanel collection and through the appearance of a Crow including beading, lace, geometric shape and an achromatic colour scheme. The predominant features that I have used from the Chanel collection are the angular and geometric structure of each bodice, the lace and the movement of the overskirt. The raised collar represents a dark, sinister nature of an enchanted queen. Due to the fact that black and white contrasts each other, it will create a strong, bold design.



FURNISHING - Stacey Tse

The Major Textiles Project created is focused on furnishings; a bed throw and complementary cushion set will be created. The furnishing set it will have an oriental theme. In particular, some features that have inspired the final design consist of bamboo, hand embroidery, peony flowers, fans and silk. The peony flowers are shown through the creation of the flowers made from chiffon which highlights the delicacy of the petals. The bamboo is evident through the use of hand embroidery and pleating. The different coloured threads highlight the shades and tones of bamboo. The use of pleating is another creative way to resemble the bamboo. The large fan featured on the bed throw acts as the focal point as it features the bamboo and peony flowers. The silk reflects the oriental theme as it has a historical influence, and it creates an elaborate appeal through its lustre.



APPAREL - Isabel Virgona

My apparel garment encapsulates the concepts of sustainability and the appreciation of natural fibres, fabrics and colouration techniques. I was inspired by the aerial view of intense agricultural cultivation, and the sporadic patterns of which break up the bigger space into contrived, geometric paddocks. This is portrayed through the patch worked panels, which are bordered by a hemp/wool blended crochet yarn, imitating a fence line. I was also inspired by the tonal variations between paddocks in accordance to their use. This influenced me to experiment the incredible colourations that could be derived from plant dyes in the presence of a metal mordant. I selected eucalypt, coreopsis, pecan, and red and brown onions to create dye baths which I used to colour the fabrics in the patchwork panels. Utilising the beauty fibres of hemp, silk, cotton and wool, the dye baths were accepted in different and interesting forms.



FROM THE TAS COORDINATOR

Congratulations to the students in both the Design and Technology and Textiles and Design classes. They have worked hard over the HSC course designing and creating their major works and have all achieved a high standard which they should be proud of. The diversity in the projects reflects each individual student's talents and interests.

The students have been well supported by their teachers Mr Henderson (Design & Technology) and Mrs Saliba (Textiles & Design). I would like to thank them for their commitment to helping each student achieve their full potential.

I would also like to acknowledge the contribution of the TAS staff and assistants who taught and supported these Year 12 students throughout their junior years of study.

We wish all the students well as they continue to prepare for their HSC examinations and look forward to hearing of their success after school.

Ms Deborah Bachmann (TAS Coordinator)

SANTA SABINA COLLEGE - Information

Secondary School 90 The Boulevard Strathfield NSW 2135
Telephone: 9745 7000
Fax: 9745 7001

Middle School 90 The Boulevard Strathfield NSW 2135
Telephone: 9745 7150
Fax: 9745 7151

Primary School 59 The Boulevard Strathfield NSW 2135
Telephone: 9745 7700
Fax: 9745 7701





SANTA SABINA
COLLEGE